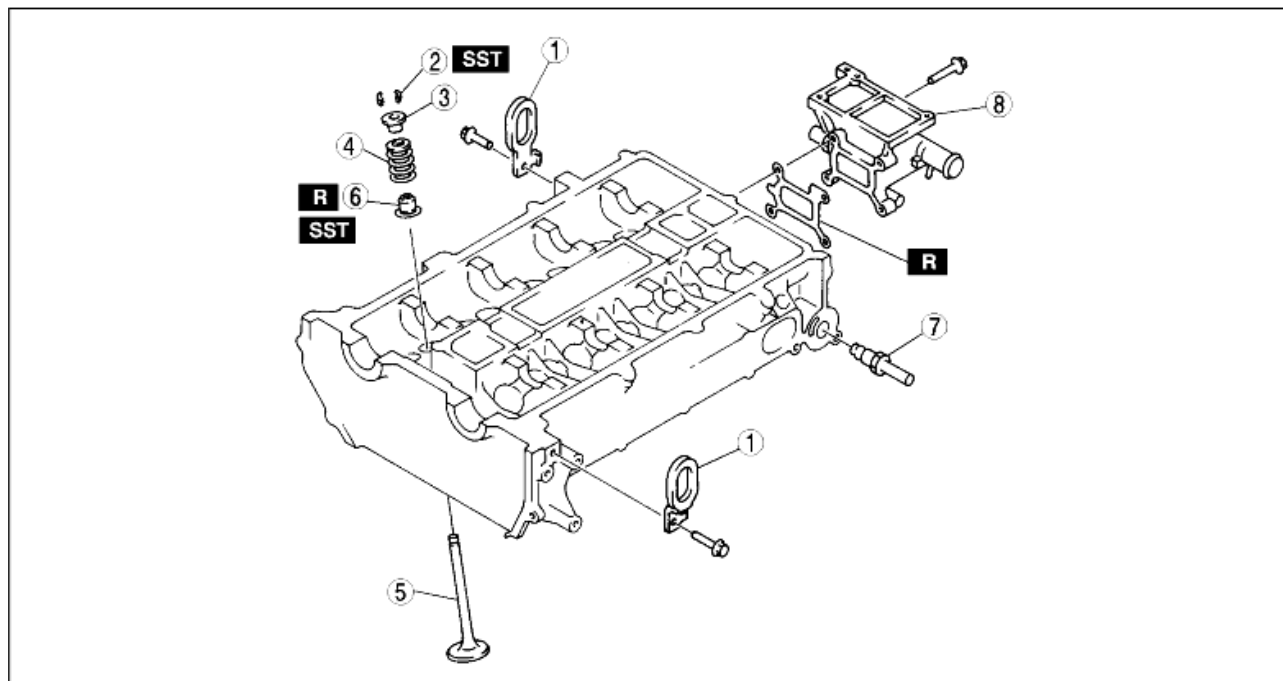


CYLINDER HEAD (II) DISASSEMBLY

A6E242402000E06

1. Disassemble in the order indicated in the table.

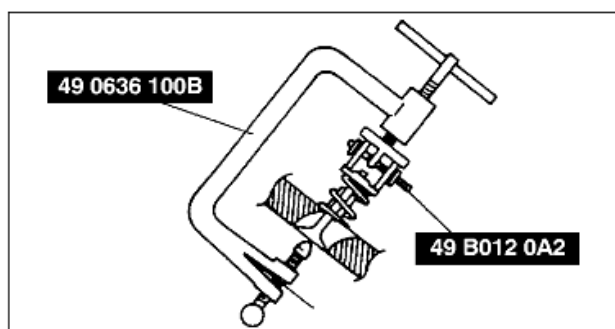


AME2224E00S

1	Engine hanger
2	Valve keeper (See Valve Keeper Disassembly Note)
3	Upper valve spring seat
4	Valve spring
5	Valve
6	Valve seal (See Valve Seal Disassembly Note)
7	EGR pipe
8	Water outlet case

Valve Keeper Disassembly Note

1. Remove the valve keeper using the SSTs.



AME2224E302

Valve Seal Disassembly Note

1. Remove the valve seal using the **SST**.

